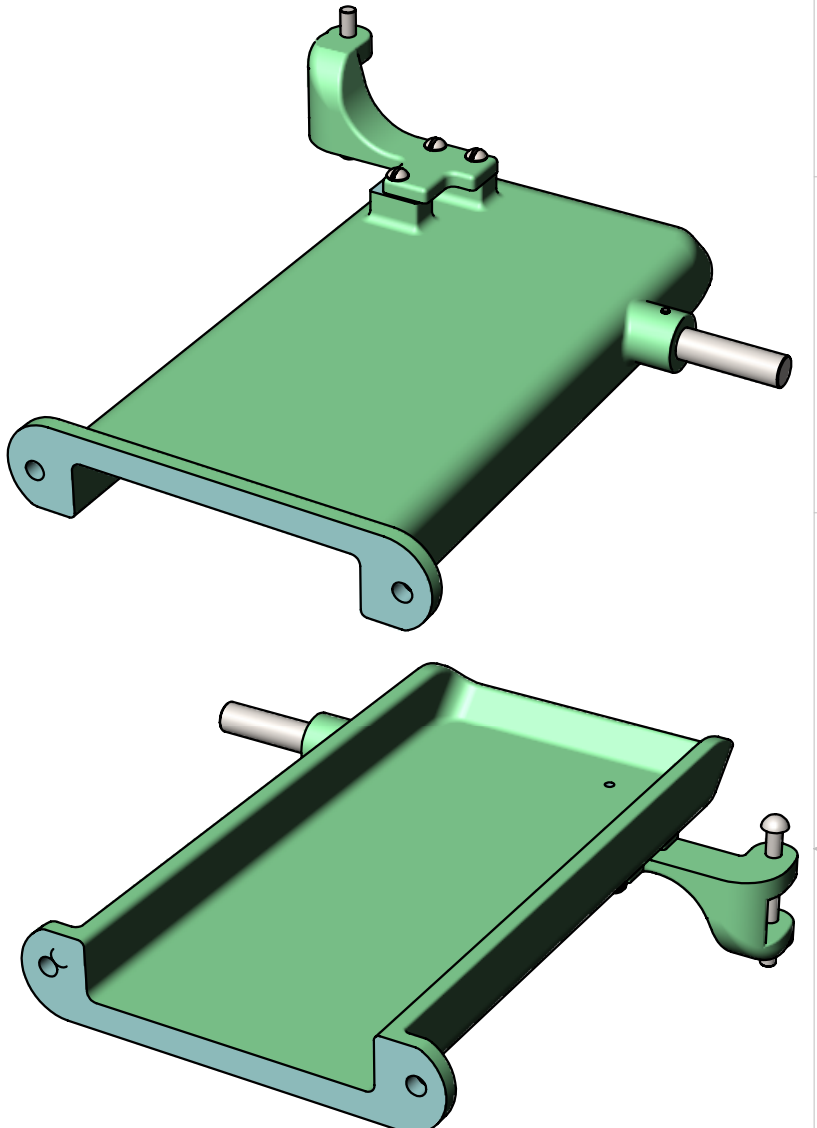
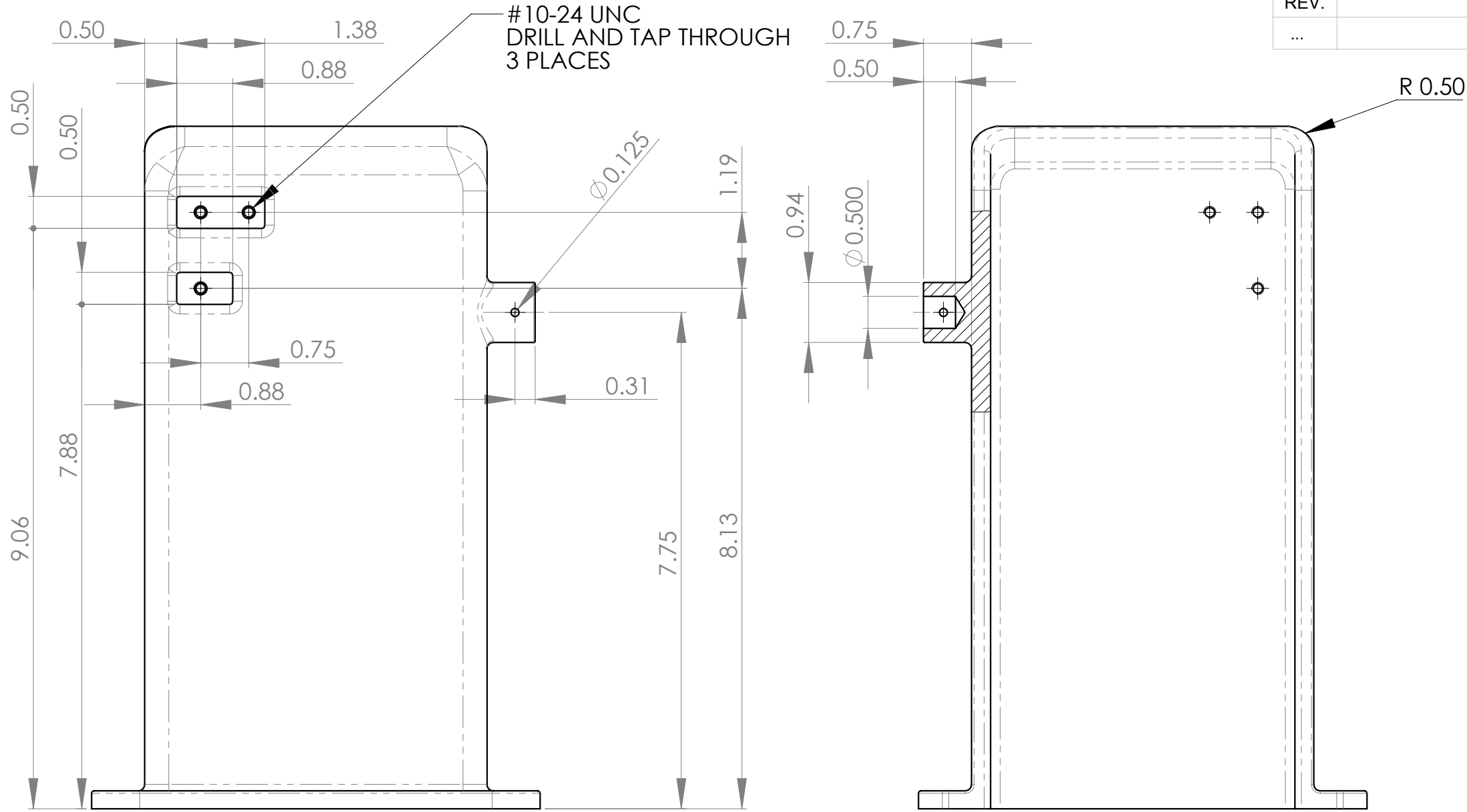


REVISIONS			
REV.	DESCRIPTION	DATE	APPROVED
...





ASSEMBLED OIL PAN SHOWN
(WITH STUD S7-38, HINGE L3-723 AND HINGE PIN S7-199)

- NOTES:
1. DIMENSIONS MEASURED FROM EXISTING CASTING
 2. UNDIMENSIONED FILLETS AND RADIUS AS YOU SEE FIT

NOTICE:

The information contained hereon is the sole property of CNCWINGS. This drawing and/or technical data is issued in confidence for information only and may not be reproduced or used to manufacture anything shown or referred to hereon without direct written permission from CNCWINGS to the user. This drawing and/or technical data is loaned for mutual assistance and is to be returned or destroyed after use. THIS DRAWING AND/OR TECHNICAL DATA IS THE PROPERTY OF CNCWINGS

ITEM NO.		PART OR IDENTIFYING NO.		DESCRIPTION			MANUFACTURER		QTY REQ'D						
MASS: 5.672 LBS				PARTS LIST											
UNLESS OTHERWISE SPECIFIED DIMENSIONS ARE IN: INCHES				JOB NO: ATLAS 7B		<div> WWW.CNCWINGS.COM</div>									
TOLERANCES ARE: X.± .5 X.± .1 X°± 1° XX± .05 XXX± .008				DRAWN: R.GARGULAK		DATE:		TITLE: OIL PAN							
				DESIGNED: R.GARGULAK		DATE: 01/04/2017									
MATERIAL: Malleable Cast Iron				CHECKED:		DATE:									
FINISH:				APPROVED:		DATE:		SIZE: B		FSCM No.		DRAWING NUMBER: S7-107		REV -	
SIMILAR TO: N/A				APPLICATION: N/A				SCALE 1:2		RELEASE DATE: N/A		SHEET: 2 OF 2			

